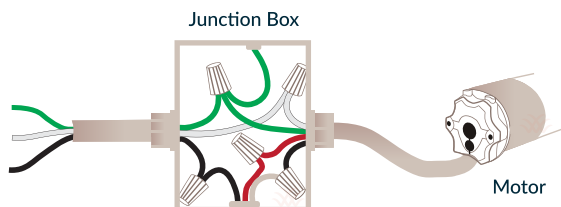


# ROLLER SHADE Hardwired

## THINGS TO KNOW

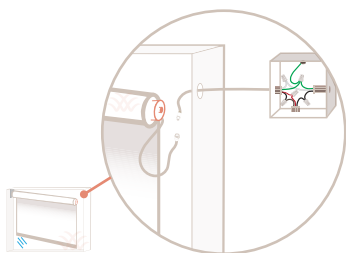
### POWER



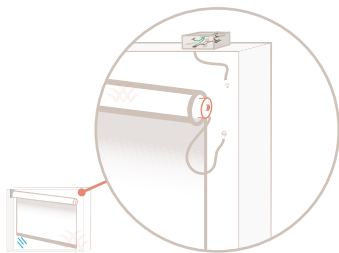
In order to provide power to hardwired roller shades, the location will need a Junction Box. This piece needs to be installed prior to our team coming onsite to measure; explore options for location and controls below.

### LOCATION

#### OUTSIDE OF WINDOW



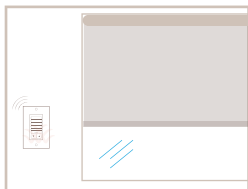
#### INSIDE OF WINDOW



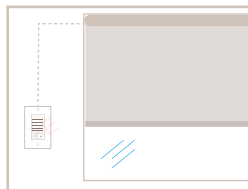
The J-Box can be located behind the drywall on either side of the window or within the window opening.

### CONTROLS

#### WIRELESS WALL SWITCH



#### WIRED WALL SWITCH



#### REMOTE



Our wireless wall switches and remotes should be operated anywhere within 60 feet from the shade window. Our remote controls are battery powered and RTS-controlled enabling users to control their window treatments by radio waves.